



## Table of Contents

|   |                              |
|---|------------------------------|
| <b>Product Specifications</b>                 | <b>3</b>                     |
| <b>PRE-TESTING NOTES</b>                      | <b>4</b>                     |
| <b>Installation</b>                           | <b>5</b>                     |
| <b>Installing the Back Plate</b>              | <b>5</b>                     |
| Mounting Location                             | 5                            |
| Mounting Height and Position                  | 5                            |
| Choosing A Suitable Mounting Location         | 5                            |
| <b>MOUNTING &amp; STARTING THE INSTRUMENT</b> | <b>6</b>                     |
| Installing the Back Plate                     | 6                            |
| Mounting Instructions                         | 6                            |
| Electrical Connection & Power Supply          | 7                            |
| Initial Start-Up                              | 7                            |
| <b>PRE-TESTING NOTES</b>                      | <b>7</b>                     |
| <b>Operating Instructions</b>                 | <b>7</b>                     |
| <b>Providing a Breath Sample.</b>             | <b>7</b>                     |
| <b>Analysing the Breath Sample</b>            | <b>8</b>                     |
| <b>Invalid Sample</b>                         | <b>8</b>                     |
| <b>Owner Servicing</b>                        | <b>8</b>                     |
| <b>Cleaning</b>                               | <b>8</b>                     |
| <b>Mouthpieces / STRAWS</b>                   | <b>9</b>                     |
| <b>User Controls</b>                          | <b>9</b>                     |
| <b>Powering the Instrument On</b>             | <b>9</b>                     |
| <b>Powering the Instrument Off</b>            | <b>9</b>                     |
| <b>Status LEDs</b>                            | <b>10</b>                    |
| <b>STAT4 – Logs Status Indicator</b>          | <b>10</b>                    |
| <b>STAT5 – Operating Status Indicator</b>     | <b>10</b>                    |
| <b>Buttons</b>                                | <b>11</b>                    |
| <b>USB Keyboard</b>                           | Error! Bookmark not defined. |
| <b>USB Keyboard Function Keys</b>             | <b>12</b>                    |

|   |           |
|---|-----------|
| <b>User Interface</b>                       | <b>12</b> |
| <b>Accessing the User Menu</b>              | <b>12</b> |
| <b>Status</b>                               | <b>12</b> |
| Status Items                                | 13        |
| <b>Network Connections</b>                  | <b>13</b> |
| <b>About PAGE</b>                           | <b>14</b> |
| <b>Settings page</b>                        | <b>14</b> |
| Instrument Information                      | 14        |
| Clock                                       | 14        |
| Authorisation                               | 14        |
| Shutdown Instrument                         | 14        |
| <b>Custom Appearance</b>                    | <b>15</b> |
| General Information                         | 15        |
| Background Graphics                         | 15        |
| Custom Text                                 | 15        |
| <b>Intervals</b>                            | <b>15</b> |
| <b>Logs</b>                                 | <b>16</b> |
| View  | 16        |
| Export Logs                                 | 16        |
| Erase Event Logs                            | 17        |
| <b>Networks</b>                             | <b>17</b> |
| Configuration                               | 17        |
| Network Setup                               | 17        |
| Services                                    | 17        |
| Authorisation Over Network                  | 17        |
| Alcolizer Portal                            | 18        |
| Enabling AlcoCONNECT Data Management Portal | 18        |
| <b>Email</b>                                | <b>18</b> |
| Email Settings                              | 18        |
| Settings – Mail Template                    | 18        |
| Settings – Server Test Mail                 | 19        |
| Test Mail                                   | 19        |
| Email Status                                | 19        |
| Email Reports                               | 19        |
| Breath Test Results                         | 19        |
| Instrument Status                           | 19        |
| Event Log Report                            | 20        |
| <b>Relays</b>                               | <b>20</b> |
| Hardware                                    | 20        |

|  |           |
|--|-----------|
| Configuration  | 20        |
| <b>Functions</b>                                       | <b>21</b> |
| Functions Menu   | 21        |
| <b>Self-Check</b>                                      | <b>21</b> |
| <b>Breath Test Authorisation</b>                       | <b>21</b> |
| <b>Authorisation Code Entry</b>                        | <b>22</b> |
| <b>Serial Port Authorisation</b>                       | <b>22</b> |
| Americium Serial Protocol                              | 22        |
| <b>Upgrade Software</b>                                | <b>22</b> |
| <b>Installing the update on your Centurion</b>         | <b>23</b> |
| <b>Checking the software version in your Centurion</b> | <b>23</b> |
| <b>Calibration</b>                                     | <b>24</b> |
| <b>Calibration Interval</b>                            | <b>24</b> |
| <b>Alcohol Sample Module (ASM) calibration</b>         | <b>24</b> |
| <b>Instructions for replacing the ASM</b>              | <b>24</b> |
| Turn the instrument OFF                                | 24        |
| Exchanging the ASM                                     | 24        |
| Main Module Servicing                                  | 24        |
| <b>Printer Setup</b>                                   | <b>25</b> |
| <b>Troubleshooting</b>                                 | <b>25</b> |
| <b>Contacting Service</b>                              | <b>25</b> |
| Routine servicing of the ASM                           | 25        |
| Contacting Alcolizer Service                           | 25        |
| Returning equipment to Alcolizer Service               | 25        |

## SAFETY WARNING

- This instrument contains no user-serviceable parts. If servicing is required, please contact **Alcolizer Technology** on **1300 789 908**.
- This appliance is **not intended for use** by individuals (including children) with reduced physical, sensory, or mental capabilities, or lack of experience and knowledge, unless they are supervised or instructed by a person responsible for their safety.
- **Children must be supervised** to ensure they do not play with the appliance.
- If the **power supply cord is damaged**, it must be replaced by the manufacturer, its service agent, or similarly qualified personnel to avoid a hazard.

**Thank you for entrusting Alcolizer Technology. This manual includes installation, operation & troubleshooting for your Centurion Quantum device. Please familiarise yourself with the safety warnings and cautions listed throughout this manual.**

Centurion Quantum comes in a variety of models with various configurations. Depending on the type of Centurion Quantum purchased, this manual may contain information that is not applicable to your model. This manual is divided into various sections and sub-sections to enable the user to access the required information with ease. It includes warnings, cautions and notes applicable to the Centurion Quantum instrument.

**ALCOLIZER TECHNOLOGY 1300 789 908**

36 Mumford Place, Balcatta WA 6021

**[www.alcolizer.com](http://www.alcolizer.com)**

**[service@alcolizer.com](mailto:service@alcolizer.com)**

## PRODUCT SPECIFICATIONS

Built with long-lasting, durable steel construction, the Centurion is engineered to withstand continuous, long-term use in demanding environments.

Weighing under 10 kg, it can be easily wall-mounted in multiple accessible locations to suit your operational needs. A large display screen also makes for clearer and easier reading of displayed results.



| Item                  | Specification  |
|-----------------------|--|
| Dimensions            | 410 mm (H) × 210 mm (W) × 110 mm (D)   |
| Weight                | 4.5 kg   |
| Power                 | 100–240V ~ 50/60Hz, 60W  |
| Housing               | Steel construction   |
| Sensor                | Alcohol-specific electrochemical fuel cell   |
| Response Time         | Within 3–5 seconds for a 0.100 g/210L BrAC reading   |
| Display – Type        | 18 cm (7") colour graphics LCD   |
| Recovery Time         | Instantaneous for 0.000 BrAC readings (reading remains on screen for 10 seconds)   |
| Operating Temperature | –10°C to 55°C  |
| Storage Temperature   | –10°C to 70°C  |
| Measurement Display   | 4 digits (x.xxx g/210L BrAC)   |
| Detection Range       | 0.000 – 0.500 g/210L   |
| Accuracy              | Better than ±0.005 g/210L (BrAC)   |
| Sample Volume         | 1.0 litre  |
| Minimum Air Flow Rate | 10 L/min   |
| Calibration           | 12-month module exchange system for on-site calibration  |
| Certifications        | AS 3547.1:2019 (Breath alcohol testing devices for professional use)<br>AS/NZS 3100:2017 (General requirements for electrical equipment) |

## PRE-TESTING NOTES

- Users should follow good hygiene practices. It is recommended that donors **wash their hands before and after** using the instrument.
- For accurate results, **do not consume food, beverages, medications, smoke, vape, e-cigarettes, or use alcohol-containing substances** for at least **15 minutes prior to testing**.
- Allow **15 minutes** for any potential interfering alcohol to clear from the donor before retesting.
- **Avoid cleaning the instrument with high-alcohol content materials.** Residual alcohol may cause background interference, which can be detected by sensitive breathalysers.
- **Breath alcohol concentration can continue to rise** for up to **2 hours** after drinking has stopped. Caution should be exercised if a result is close to the designated limit.
- When a high breath alcohol level is reached, it may take **10 hours or more** for the level to return to zero.
- If the test result exceeds the operational maximum limit, a **plus sign (+)** will appear after the result.

## Module Exchange Calibration

The Centurion Quantum is a wall-mounted alcohol breath testing instrument designed for high-volume, fixed-point commercial and industrial applications. It features innovative, patented replacement module technology, eliminating the need to return the instrument to base for servicing. Instead, Alcolizer Technology provides a convenient exchange module, ensuring minimal downtime and maximum operational efficiency.

## Available Accessories

The Centurion Quantum supports a range of optional accessories to enhance functionality:

- Alert System (LED strobe and buzzer)
- Card Reader
- iPad Connectivity (via Wi-Fi router)
- Printer
- Wiegand Interface

**⚠** *Some accessories require specific installation and operating instructions. Please contact your Alcolizer Technology representative for further guidance.*

# INSTALLATION

## INSTALLING THE BACK PLATE

### Mounting Location

When selecting a suitable mounting location, consider the following:

- The instrument must be mounted on a **wall or structure capable of supporting its weight**.
- The instrument must **not be exposed to rain or water**.
- It should be installed **close to a mains power socket** for easy connection, and near a **network point** if advanced connectivity features are being used.
- The location must be within the **defined operating temperature range** (refer to the *Product Specifications* section).

### Mounting Height and Position

- Mount the instrument at a height that accommodates the **majority of expected users**.
- Ensure there is **clear access to the key lock** and sufficient space for the **unit to swing open** during servicing or module replacement.

**⚠ Warning – Electrical Safety.** When the unit is open or not installed on the back plate, electrical components are **exposed**. To prevent the risk of electric shock always isolate electrical power at the supply power point before opening the unit, unless power is specifically required for authorised troubleshooting procedures. Only qualified personnel should perform maintenance or troubleshooting involving exposed electrical components.

### Choosing A Suitable Mounting Location

The Centurion is a rugged, durable system proven across thousands of deployments worldwide - from controlled indoor facilities to demanding industrial and remote environments. To ensure optimal performance and long-term reliability, careful consideration should be given to the physical mounting location and environmental conditions surrounding.

#### Indoor Installation

Indoor environments offer the most stable conditions and are generally easiest to manage.

- **Preferred location** - A temperature- and humidity-controlled area (similar to an office setting).
- **Benefits** - Consistent operating conditions minimise exposure to extremes and ensure long-term reliability.

#### Outdoor Installation

The Centurion is purpose-built for commercial and industrial environments - whether in an office foyer, on a mine site, or beside an access-control kiosk.

- Many industrial deployments require the unit to be installed outdoors or in semi-exposed locations alongside workforce management equipment.
- The Centurion is well-suited to outdoor installation; however, these environments naturally offer less control over temperature, sunlight, and weather.
- When installing outdoors, take reasonable steps to ensure the unit operates within its design specifications and complies with local workplace health and safety requirements.
- Consider how environmental conditions may change throughout the day, during adverse weather, and across different seasons when selecting the mounting location.



## Environmental Considerations

Regardless of whether the unit is mounted indoors or outdoors, review the following factors to ensure reliable performance:

- **Weather Protection** – Provide shielding from rain, snow, frost, and condensation. A simple awning, enclosure, or recess can greatly extend service life.
- **Avoid Direct Sunlight** – Do not mount the unit in direct sun or in locations that experience intense heat build-up, as this can cause internal temperatures to exceed operational limits.
- **Sun Angle Awareness** – Consider the sun's movement throughout the day and how its angle changes between seasons (e.g., lower winter sun vs. overhead summer sun).
- **Airflow and Ventilation** – Ensure there is adequate airflow around the unit to prevent heat build-up, particularly if installed within a recess or enclosure.
- **Vibration and Movement** – Avoid mounting on surfaces subject to heavy vibration (e.g., vibrating platforms, gates, or machinery) to ensure consistent sensor performance.
- **Ingress Pathways** – Where possible, minimise the likelihood of wind-driven dust, salt spray, or fine particles entering the immediate area around the device.
- **User Accessibility** – Ensure the mounting position is safe, easy for users to access, and compliant with any local WHS or accessibility requirements.

## MOUNTING & STARTING THE INSTRUMENT

### Installing the Back Plate

Follow these steps to securely install the back plate:

1. **Unpack** the instrument and remove it from the packaging.
2. **Unlock** the instrument and **detach the back plate** from the unit.
3. **Select a suitable mounting site** as outlined in the above section.
4. If required, **remove any cutaway portions** on the back plate to allow for cable access (e.g., Ethernet).
5. **Secure the back plate** to the wall using appropriate **masonry fixing hardware** (e.g., medium-duty anchors).
6. Ensure the fixings are **strong enough to support the instrument's weight** and any incidental loading (e.g., someone leaning on the unit).

**⚠ Important - Do not use adhesives as a mounting method. Adhesives are not considered safe or reliable for securing the Centurion Quantum.**

### Mounting Instructions

Once the back plate is installed:

1. With assistance if needed, **hang the instrument onto the back plate** by aligning the **male lift-off hinge pins** on the back plate with the **female hinge tubes** on the instrument.
2. Confirm the unit **swings freely** and does not interfere with nearby fixtures.
3. **Route all cables** carefully to avoid damage or trip hazards.
4. **Visually inspect** the unit for any loose components from transport.
5. **Remove all packing materials.**
6. **Peel off the screen protector film** from the front display.

## Electrical Connection & Power Supply

- The Centurion Quantum must be connected to an **independent electrical supply**.
- It should **not rely on third-party devices** for power delivery.
- The unit is supplied with an **Australian-standard electrical plug**. Should a need arise to replace this plug please refer to the 'Wall Mounted Products Technical Manual'.
- The Quantum has a variety of input/output ports for connecting peripherals. For guidance on how to connect to/from these ports please consult the 'Wall Mounted Products Technical Manual'.

## WARNING

To power down the instrument correctly, open the unit and press the internal "OFF" button. Do not switch off the power supply or unplug the device from the wall socket, as this may compromise log retention and unnecessarily drain the emergency backup battery.

## Initial Start-Up

To begin using the Centurion Quantum, follow these steps:

1. **Connect the unit to mains power.** The Centurion will automatically initiate its start-up sequence.
2. **Wait for the system to load.** The instrument may take several minutes to complete its start-up process. During this time, a **loading screen** will be visible.
3. **Confirm readiness.** The unit is ready for use when the **display screen becomes active** and shows the welcome screen, indicating it is ready to receive a breath sample.



## PRE-TESTING NOTES

- Users should follow good hygiene practices. It is recommended that donors **wash their hands before and after** using the instrument.
- For accurate results, **do not consume food, beverages, medications, smoke, vape, e-cigarettes, or use alcohol-containing substances** for at least **15 minutes prior to testing**.
- Allow **15 minutes** for any potential interfering alcohol to clear from the donor before retesting.
- **Avoid cleaning the instrument with high-alcohol content materials.** Residual alcohol may cause background interference, which can be detected by sensitive breathalysers.
- **Breath alcohol concentration can continue to rise** for up to **2 hours** after drinking has stopped. Caution should be exercised if a result is close to the designated limit.
- When a high breath alcohol level is reached, it may take **10 hours or more** for the level to return to zero.
- If the test result exceeds the operational maximum limit, a **plus sign (+)** will appear after the result.

## OPERATING INSTRUCTIONS

### PROVIDING A BREATH SAMPLE.

Perform a breath test in accordance with the following procedure:

- Ensure the instrument is displaying the **welcome screen** with instructions on how to provide a breath sample. In some cases, a **customised customer welcome screen** may be shown.

- Select a new straw. Alcolizer Technology recommends the use of **individually wrapped straws** to maintain hygiene standards.
- Place the straw into the sample port and begin blowing steadily.
- Continue blowing until the **progress bar reaches 100%**.
- A **beeping sound** will be heard during the blow sequence to indicate the sample is being received.
- **Stop blowing** when the display shows Stop Blowing which is also indicated by a long beep.
- After each test, ensure straws are disposed appropriately according to your local authority disposal regulations.

**⚠ Caution – Sample Port Integrity. Never inject fluids into the sample port.**

Doing so could render the instrument **inaccurate** for subsequent tests, **temporarily disable** the unit and **void the instrument warranty**.



### ANALYSING THE BREATH SAMPLE

Once a breath sample has been successfully provided, the Centurion Quantum will automatically begin analysing the sample. The result will be displayed on screen, and the **text colour will change** according to the detected alcohol level.

The result will remain visible on the screen while the instrument resets itself in preparation for the next test. For zero readings, the reset time is typically about 10 seconds. For elevated alcohol readings, the reset time may be longer to allow for full processing and display.

| BrAC Reading (g/210L) | Display Colour |
|-----------------------|----------------|
| 0.000                 | Green          |
| 0.001 – 0.046         | Orange         |
| Above 0.046           | Red            |

### INVALID SAMPLE

The invalid blow screen is displayed if the user stops blowing before 1.0L of breath is recorded, they blow too softly, blow too hard or for not long enough. If the blow is invalid, cease blowing, wait until Insert Straw and Blow screen is displayed and provide another sample.

## OWNER SERVICING

### CLEANING

Regular cleaning of the Centurion Quantum is essential to maintain hygiene, ensure accurate test results, and prolong the life of the instrument. Cleaning should be conducted using appropriate **personal protective equipment (PPE)**, such as gloves.

- The instrument should be cleaned with a soft cloth and antibacterial spray.
- **Do not** use harsh cleaning agents,
- **Do not** use alcohol-based cleaning products, abrasive cleaning pads or chemicals.
- Non-alcohol-based cleaning wipes can be used to clean the instrument.
- Main body & Screen
- Should be cleaned daily or as required based on volume of testing and local conditions.
- Clean by wiping over with a soft moist cloth followed by a soft dry cloth.
- **Sample Port** - as part of routine cleaning, use the brush provided to clean the sample port as follows:
- Turn off the instrument.
- Gently clean around the sample port inlet.
- Do not insert anything into the sample port itself.

- Ensure no contamination or foreign objects enter the sample port area.
- Once cleaning is complete, test the unit by performing a breath test.
- The sample port should be cleaned at least daily or as required based on the volume of testing and local conditions.

## MOUTHPIECES / STRAWS

Centurion Quantum is certified to AS 3547.1:2019, including its straw component, which is essential for directing breath samples into the analysis system. **The straw's diameter is critical to airflow dynamics:**

- Too narrow and it increases resistance and reduces sample volume, **affecting accuracy.**
- Too wide and it reduces resistance but **may compromise airflow control and consistency.**

**To maintain certification, any changes to straw specifications or materials require re-certification.** Biodegradable straws are available to purchase directly online with bulk pricing available:

- Individually wrapped <https://alcolizer.com/product/paper-straw-mouthpieces-wrapped-and-biodegradable/>
- Unwrapped <https://alcolizer.com/product/paper-straw-mouthpieces-unwrapped-biodegradable/>

## USER CONTROLS

### POWERING THE INSTRUMENT ON

The Centurion Quantum breathalyser will automatically power on when connected to a power source.

- If the unit has been unplugged, simply reconnect it to power.
- If the unit is powered but has been shut down (see below), press the **OFF** button momentarily to turn it back on.

### **⚠ WARNING EXPOSED ELECTRICAL COMPONENTS**

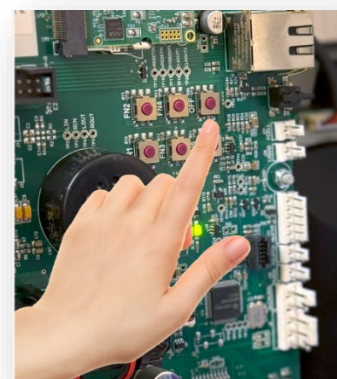
When the instrument is open or not mounted on its back plate, **electrical components are exposed**. The following procedures require the instrument to be opened **with power applied**. During these steps **only activate the buttons specifically mentioned**. **Do not touch or come into contact with any exposed components.**

### POWERING THE INSTRUMENT OFF

To power off - do NOT press and hold the OFF button. There are two supported methods to safely shut down an Alcolizer wall-mounted instrument:

- **Via USB keyboard** - Navigate to **Settings > Shutdown Instrument**
- **Momentarily press the OFF button** located on the PCBA

**⚠ Important** - Holding down the OFF button may corrupt the firmware and calibration. This method must not be used, even if the instrument appears frozen. If the instrument is unresponsive, **removing power** is the recommended shutdown method.



The device is designed to safely shut down during power loss, supported by its backup battery. To confirm shutdown is complete, check the **STAT5 LED** located beside the **FN buttons** (it should be off).

### STATUS LEADS

The instrument’s status can also be assessed by viewing the **STAT4** and **STAT5** LEDs on the main circuit board while the unit is powered on. If any other blinking patterns are observed, contact our service centre on 1300 789 908.

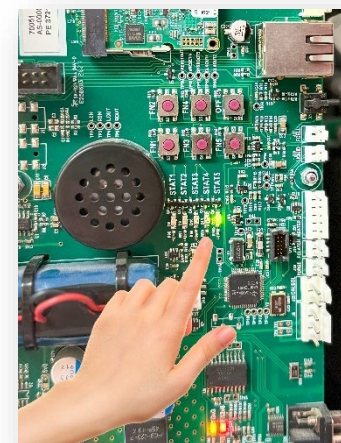
#### STAT4 – LOGS STATUS INDICATOR *(shows current state of instrument)*

- **Blinking** – Logs are being written.
- **Off** – No actions involving logs.

#### STAT5 – OPERATING STATUS INDICATOR *(shows current state of instrument)*

- Reset
- Starting Up
- Running
- Shutting Down

These states are indicated by **blinking patterns** (see table below).



#### **Additional states:**

- **Steady ON** – Instrument is shut down but still connected to mains power.
- **Off** – Instrument is fully shut down and disconnected from power.

**Shutdown Confirmation** - To verify successful shutdown, wait for the **STAT5 LED to stop blinking**. This is the only reliable indicator that the instrument has completed its shutdown sequence.

**Power Indicators** - The **Red 12V0** and **Orange 3V3** LEDs on the left side of the board will remain lit if the unit is plugged in. This is normal and does not indicate shutdown status.

**Shutdown Duration** - Shutdown takes **at least 15 seconds**, and may take longer if the instrument has a large number of event log records. There is no way to speed up this process.

**⚠ Do Not Force Shutdown** - Pressing and holding the OFF button to “drain power” is **not supported** and may **corrupt the software**. This action forces a reset during shutdown and must be avoided.

| Wallmount State | STAT5 LED Indication | Pattern Specification                          |
|-----------------|----------------------|--|
| Reset           | Fast blinking        | 40ms on, 40ms off (12Hz)                       |
| Starting Up     | Two short pulses     | 100ms on, 100ms off, 100ms on, 700ms off (1Hz) |

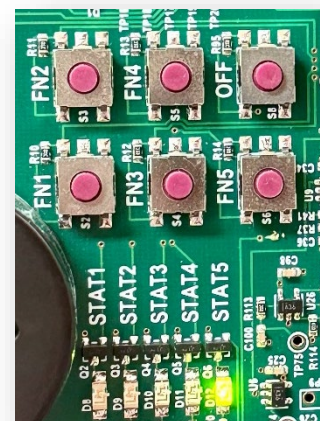
| Wallmount State | STAT5 LED Indication | Pattern Specification     |
|-----------------|----------------------|---------------------------|
| Running         | One short pulse      | 100ms on, 900ms off (1Hz) |
| Shutting Down   | Steady blinking      | 100ms on, 100ms off (5Hz) |
| Shut Down       | On                   | ON                        |
| Off             | Off                  | Off                       |

## BUTTONS

Inside the instrument are buttons used for setup and fault-finding. **Users should only press these buttons when explicitly instructed** by this manual or by an Alcolizer Technology technical representative. To access the buttons, unlock the Centurion Quantum and open the unit to reveal the main circuit panel.

### User-Accessible Buttons – please don't touch any other buttons

| Button | Function   |
|--------|--|
| FN1    | Show/hide the <b>Status page</b> . Equivalent to pressing <b>F1</b> on a connected keyboard. |
| FN4    | Show/hide the <b>Functions page</b> to export the event log to a USB flash memory.           |
| OFF    | Power off or power on the instrument. See Powering the Instrument Off.                       |



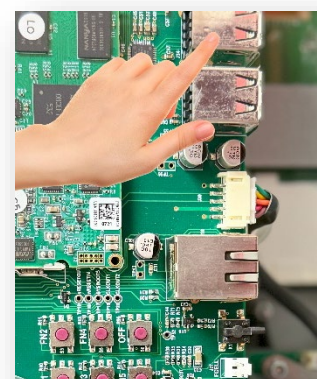
### ⚠ WARNING - ELECTRICAL SAFETY - when the Centurion Quantum is open electrical components are exposed.

- Only activate the buttons specifically mentioned.
- Do not touch or come into contact with any exposed components.
- Failure to follow these precautions may result in **personal injury, device damage, or loss of calibration.**

## USB KEYBOARD

A standard 101 style keyboard (with a standard USB connection) or a wireless keyboard can be connected to the Instrument to access menus during setup and fault finding. Users should not access the machine and attach a keyboard unless specifically requested to by instructions in this manual or verbally when in contact with your Alcolizer Technology technical representative.

Access the USB ports by unlocking the Instrument and opening.



**CAUTION - Use care when inserting the connector to the port to ensure neither are damaged.**

## USB KEYBOARD FUNCTION KEYS

With a USB keyboard connected, users can access the instrument’s configuration and status menus using the following:

- |   |   |
|---|---|
| <b>F1</b> Toggle Status screen                  | <b>Alt+down</b> Switch to next configuration page |
| <b>F4</b> Save event log                        | <b>Alt+left</b> Switch to previous tab or page    |
| <b>Alt</b> Toggle instrument configuration menu | <b>Alt+right</b> Switch to next tab or page       |
| <b>Esc</b> Toggle instrument configuration menu | <b>Ctrl+Alt+P</b> Write screen shot to USB        |

**Note:** Use **only the left Alt key**. The right Alt key has no function.


The **spacebar** functions the same as the **enter key** - when entering data, use the **spacebar** instead of Enter.

## USER INTERFACE

### ACCESSING THE USER MENU

To access the User Menu, perform the following steps:

1. **Connect a USB keyboard** as described above in USB KEYBOARD
2. Press **F1** to open the Centurion Quantum **User Menu** area.
3. Press the **left Alt** key to display available menu options.
4. Use the **Down Arrow** key to navigate to the desired menu (e.g., **Settings**).
5. Press **left Alt** again to hide the menu and access the selected page.

 **Note:** A mouse may also be used to operate the User Interface menus. Connect the mouse or wireless receiver in the same manner as the keyboard.

### STATUS

**Status Page** provides key information about the instrument and its components.

#### *Instrument*

##### **Serial Number**

A unique identifier for the Centurion Quantum unit. This number is also printed on the safety label located on the side panel of the instrument.

##### **Software Version**

Indicates the version of the main operating software installed on the instrument (e.g., fm-17.0).

##### **Alcohol Sample Module**


- **Serial Number** - unique to the Sample Module, used for traceability and support.
- **Application Version** - displays the software version currently running on the Alcohol Sample Module (e.g., 2.06).
- **Days to Calibration** - shows the number of days remaining until the next scheduled calibration is due.



## Status Items

Each status item is classified as one of the following:


| Classification  | Description   |
|-----------------|---|
| <b>Fault</b>    | The instrument has encountered a critical error and is unable to perform breath analysis. The fault must be manually cleared (or repaired) by an authorised Alcolizer service technician – please phone <b>1300 789 908</b> . |
| <b>Alert</b>    | The instrument has encountered a temporary condition that is preventing the unit from performing breath analysis. The alert will clear automatically. Breath analysis is disabled if an alert is active.                      |
| <b>Warning</b>  | Non-critical issue. Instrument continues to function normally.  |
| <b>Notice</b>   | Information that might be useful to a technician but in no way represents a problem with the instrument. Breath analysis is enabled if a notice is active.  |
| <b>Disabled</b> | Breath testing is disabled for reasons other than fault or alert.   |

 **Note:** Status items are displayed in the instrument’s current language and include a unique code to assist identification across different language settings.

## NETWORK CONNECTIONS

The Network Connections area shows status information for the Centurion Quantum Ethernet port.

- A valid network connection is not required for the instrument to operate correctly, however if a Centurion has an internet connection, the date and time will be automatically adjusted.
- If connected to a valid network the instrument's IPv4 address is displayed (e.g., 192.168.15.133).
- If not connected to a valid network, none available is displayed

 **WARNING** - When the instrument is open electrical components are exposed. The following steps require the user to open the Centurion with power applied. **Do not touch or come into contact with any exposed components.**

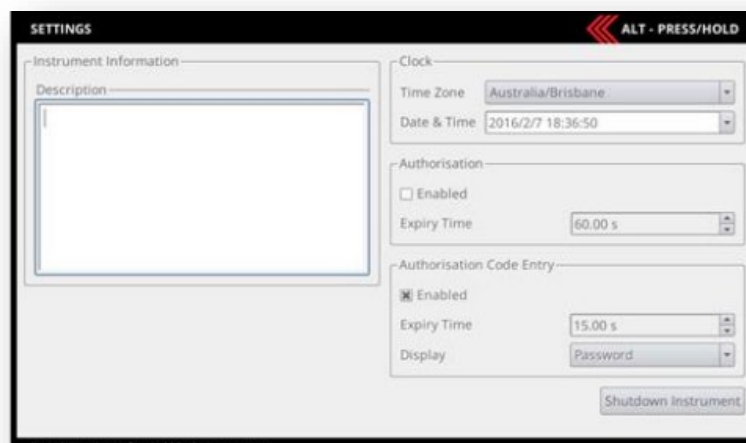
## ABOUT PAGE

Provides further detailed information about the Centurion Quantum, divided into:

- **Instrument**
- **Alcohol Sample Module**

## SETTINGS PAGE

The **Settings Page** allows users to configure various aspects of the instrument.



### Instrument Information

Add a user-specific description (e.g., “Site 13, Gate B”) to help identify the instrument. This description is automatically included in all email reports.

### Clock

The date and time can be set manually or automatically if the instrument is connected to the internet (via the wired Ethernet connection). There is no need to manually adjust if connected to the internet.

In order for the Centurion to display the correct date and time, the time zone must be set correctly. The display format is set to **YYYY-MM-DD HH:MM:SS** and cannot be changed

### Authorisation

The authorisation feature (when enabled) prevents the Centurion from performing a breath test until it has received authorisation, for example, by entering a code. This is used where you want to identify the person who is doing the breath test. Please contact your account manager for more details.

- **Enabled:** Check to enable breath test authorisation.
- **Expiry Time:** Once a single breath test is authorised, the test analysis must be completed within this time, or the authorisation expires, and a new authorisation is required.

### Shutdown Instrument

When the Shutdown Instrument button is pressed, the following options are presented to the user:

- **Reboot:** Restart the instrument.
- **Power Off:** Shutdown the instrument so that mains power can be removed. This method or the OFF button on the back of the board located internally in the Centurion, are the only two ways to correctly power off the instrument.

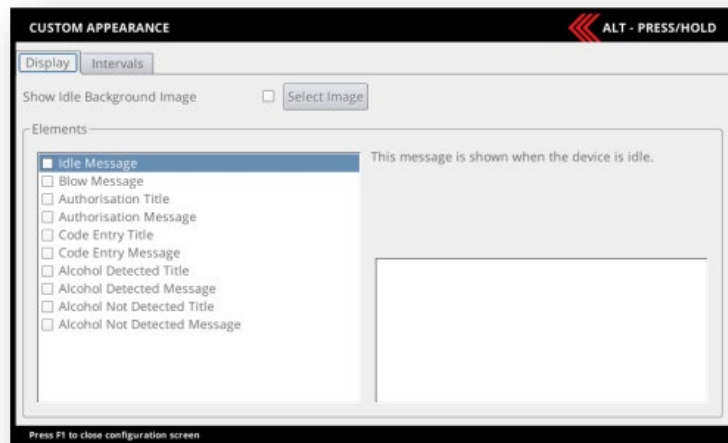


## CUSTOM APPEARANCE

### General Information

The Centurion Quantum's front screen can be customised to meet specific customer requirements. Users can display custom **images** and **messages** during idle or operational states.

- **Supported image formats**  
PNG (recommended), BMP, GIF
- **Recommended dimensions**  
800 pixels wide × 234 pixels high
- To streamline the upload process, ensure **only one image file** is stored on the USB device.



### Background Graphics

To import a custom background image for the Centurion Quantum front screen:

1. **Connect a USB keyboard** and access the User Menu (see Section 7.1).
2. Navigate to **Custom Appearance** and press **Enter**.
3. Tick the **Show Idle Background Image** checkbox.
4. Insert a USB storage device (thumb drive) containing the desired image into an available USB port.
5. Click the **Select Image** button.
6. Choose the required graphic from the **Select Image** page and click **OK**.

The selected image will now appear on the front screen. To simplify the upload process, ensure **only one image file** is stored on the USB device.

### Custom Text

The **Elements** area allows customisation of user interface text across various breath testing screens.

To display custom text:

1. Connect a **keyboard and/or mouse** and access the **User Menu** (see Section 7.1).
2. Scroll down to **Custom Appearance** and press **Enter**.
3. In the **Elements** field, tick the **Use Custom Text** checkbox.
4. Select the desired screen from the list.
5. Type the required text into the **free text field** for the highlighted screen.
6. To activate the custom text for a specific screen, **tick the box beside the screen name**.

The selected custom text will now appear on the corresponding screen during operation.

## INTERVALS

It is possible to adjust the timings for some screen display intervals. Descriptions of how the timings apply to the display are presented for each adjustable interval.

## LOGS

### View

The **View** page displays log records containing key operational and diagnostic information. Each record includes:

- A **unique log record ID**
- **Date and time** of the event
- A **brief description** of the logged event

By highlighting an item in this panel, a more **detailed view** of the selected log is shown below the list of log records.

| LOGS          |                     |                          |
|---------------|---------------------|--------------------------|
| View   Export |                     |                          |
| 380           | 7 Feb 2016 18:22:53 | System Started           |
| 333           | 7 Feb 2016 17:46:54 | System Shutdown (Button) |
| 324           | 7 Feb 2016 17:19:39 | Result (Detected)        |
| 323           | 7 Feb 2016 17:15:41 | Result (Not Detected)    |
| 322           | 7 Feb 2016 17:13:09 | Result (Not Detected)    |
| 314           | 7 Feb 2016 13:04:42 | Result (Not Detected)    |
| 312           | 7 Feb 2016 13:04:27 | System Started           |
| 285           | 5 Feb 2016 08:07:34 | Breath Testing Disabled  |

|   |
|---|
| Log Record ID: 380                            |
| Title: System Started                         |
| Created: Sunday, 7 February 2016 18:22:53 EST |

Log records may include (but are not limited to) the following events:

- **Result** – Result of a breath test
- **System Shutdown** – Instrument was shut down (powered off or rebooted)
- **System Started** – Instrument was started
- **System Time Changed** – Date or time was modified
- **Fault Set / Cleared** – A fault status item was set or cleared
- **Alert Set / Cleared** – An alert condition was set or cleared
- **Warning Set / Cleared** – A warning condition was set or cleared
- **Notice Set / Cleared** – A notice was set or cleared
- **Breath Analysis Block Set** – Data analysis disabled
- **Breath Analysis Block Cleared** – Breath analysis enabled

### Export Logs

Logs can be exported from the Centurion Quantum to a USB flash drive using the following methods:

- **Via the Export Page**  
Use the **Save** button on the Export page to manually export logs.
- **Automatic Export**  
If configured, logs can export automatically when a USB flash drive is inserted.
- **Using the FN4 Button**  
Insert a USB flash drive and press the **FN4** button on the PCBA.
  - **Supported Export Formats**
    - **CSV (Comma Separated Values)**  
Each log record is presented in a single row, with fields separated by commas. Suitable for use in most spreadsheet applications.
    - **JSON (JavaScript Object Notation)**  
Structured format ideal for integration with automated systems and software tools.
    - *Note - The export function will only operate correctly with a suitable USB device connected.*

## Erase Event Logs

To erase the current event log records on the device, go to Logs / Export menu and use the Erase Event Log button.

## NETWORKS

### Configuration

The configuration panel provides general information about the network connection and device.

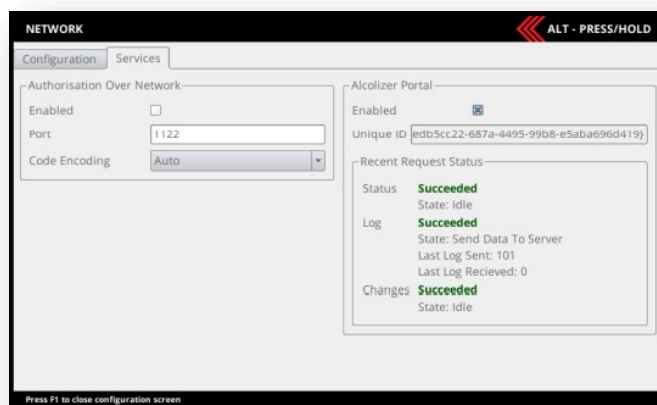
### Network Setup

The Centurion Quantum supports both **automatic** and **static** IPv4 network configurations.

### Establishing an Internet Connection

To configure network settings:

1. Connect the Centurion Quantum to an internet receptacle using an **Ethernet cable**.
2. Connect a **keyboard and/or mouse** and access the **User Menu** (see Section 7.1).
3. From the User Menu, scroll down to **Network** and press **Enter** to open the Network Configuration page.
4. Complete the configuration page by choosing one of the following options:
  - **Obtain an IP address automatically (DHCP)**
  - **Use a static IP address** – Manually enter the required network details.



## Services

The **Services** panel provides access to enable the following features:

- **Authorisation Over Network**
- **Alcolizer Data Management Portal**

### Authorisation Over Network

Breath test authorisation can be enabled over the network using the **Americium serial protocol** via a **TCP/IP port**. This feature functions identically to the protocol used over serial ports, with **no limit** to the number of simultaneous network client connections. For setup assistance, please contact Alcolizer Technology.

### Configuration Options

- **Enabled** allows the instrument to accept network connections on the specified port (*disabled by default*).
- **Port** – The TCP port number used for communication.

### Protocol Settings

The Americium serial protocol operates on both serial and network ports with the following settings:

- **Protocol Version** – Custom
- **Date/Time Format** – Local time (not UTC)

## Alcolizer Portal

Enables the instrument to post **logs** and **status information** to a secure **Cloud-based service**, providing a real-time solution with analytical and statistical tools. Please, contact your Alcolizer Technology representative for further information about AlcoCONNECT Data Management Portal. It allows you to monitor many remote sites from a single dashboard, and remotely monitor compliance of your Breathalyser testing assets.

### Enabling AlcoCONNECT Data Management Portal

To enable the Alcolizer Portal for cloud-based data management

1. **Open the device** and insert the **USB connection for a keyboard**.
2. Press **F1**.
3. Press **Esc**.
4. Use the **Arrow Down** key to navigate to **Network**.
5. Press **Tab**.
6. Use the **Right Arrow** key to switch to the **Services** tab.
7. Press **Tab** twice to highlight **Alcolizer Portal**.
8. Press the **Spacebar** to insert an "X" and enable the portal.
9. Wait for the following status indicators to confirm successful activation:
  - **Status – Succeeded**
  - **Log – Succeeded**
  - **Changes – Succeeded**

## EMAIL

### Email Settings

The Centurion is equipped for forwarding email notifications of status and logs. To configure the email function, perform the following steps:

- Establish an internet connection via the Ethernet cable. This step is not required if the instrument has a GSM modem.
- Connect a keyboard/mouse and access the User Menu in accordance with the procedures at paragraph 7.1.
- From the User Menu, access the email configuration screen by scrolling down to email and press enter.
- The email screen has two tabs: Settings, Status and Reports.

### Settings – Mail Template

The Mail Template panel allows configuration of the format and recipients of emails sent from the instrument.

- **Default Recipients:** A list of email recipients for emails produced by the instrument. e.g., someone@bigmine.com.au. Add additional recipients as required separating each with a space.
- **Sender Address:** This is the email address used to send the notifications and seen by the recipients.
- **Subject Prefix:** Text to be prepended to the subject line of emails produced by the instrument. It is also possible to use text replacement allowing real data to be inserted into the text when the email is sent.
- **Email Footer:** Text to be appended to the body of emails produced by the instrument. It is also possible to use text replacement allowing real data to be inserted into the text when the email is sent.

## Settings – Server Test Mail

The Mail Server panel allows configuration of the email account used by the instrument to send emails. This must be a valid email account as it would be configured in a desktop email program.

- **Username** - The username (typically an email address) used to log into the SMTP server.
- **Password** - Password associated with the specified username. Pressing the password button clears the current password and shows a text editor to enter a replacement password. The password characters are obscured by default; press the “eye” icon to temporarily display the password characters.
- **Hostname** - URL of the SMTP server (e.g., smtp.gmail.com).
- **Port** - The TCP/IP port number used by the SMTP server. Leave blank to use a default value.
- **Use SSL** - If enabled then use secure sockets layer to connect to the SMTP server.

## Test Mail

The Test Email panel allows sending a test email from the system, confirm email settings and provide feedback on any issues the instrument has sending emails. Activating Send will initiate a test email with the current configuration. The Test Email panel will then report the status of sending the email and if it fails, indicate information about how sending the test email failed.

Due to the very long timeout periods specified for email configuration, if there is an issue with the Mail Server settings, it can take a very long time for the test email to fail, and this can also block further test emails being sent until the time out for the previous email has sent.

## Email Status

This feature has two panels:

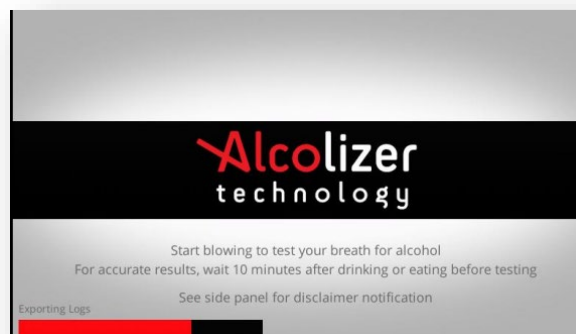
- **Status** indicates the status of the email/s being sent.
- **Queue** emails can be seen in the queue that are ready to send; the queue can be cleared by selecting the “Clear Email Queue” tab at the bottom.

## Email Reports

The Reports panel allows setup the breath test results and instrument status that will be sent via email. The frequency that the report will be sent can be set up on this panel.

## Breath Test Results

The instrument can be configured to send an email detailed result of a breath test. This can be done for both negative and positive results. If instrument authentication is enabled, the report can also include information about previous breath tests from the same authentication code.



## Instrument Status

Notification about changes in instrument status can be sent from the instrument for various types of status information. The report includes information on all currently active status items, not just the status item that changed state.

### The status options are:

- **Faults (Permanently Out of Order)** – send an email if a fault is raised or cleared.
- **Alerts (Temporarily Out of Order)** – send an email if an alert is raised or cleared.
- **Warning** – send an email if a warning is asserted or cleared.
- **Notice** – send an email if a notice is asserted or cleared.

### Event Log Report

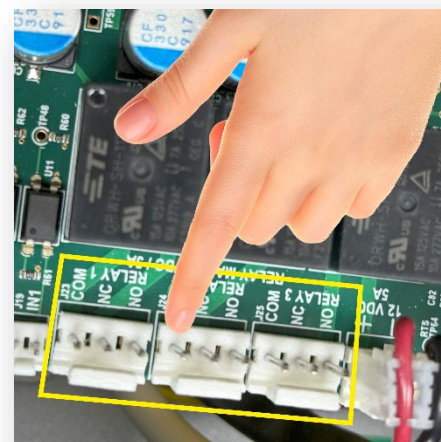
The instrument can be configured to send periodic emails containing log information for the given period. The interval for the report can be configured from hourly through to monthly and the day or hour the report will occur on is dependent on the start date. For example:

- The current date is the 3rd of October 2021.
- The Start Time chosen is on the 29th of September 2021, 12 noon.
- The Report Interval is Weekly.
- The next email will be sent on the 6th of October 2021, 12 noon.  
And every week thereafter until the configuration is changed.

### RELAYS

The Centurion is equipped with three relay outputs on the circuit board and their outputs can be configured to trigger in response to a breath test result.

If a relay output is enabled, the relay will trigger for the specified duration.



### Hardware

The relay outputs are labelled on the circuit board as Relay1, Relay2 and Relay3. Each relay output has three terminals:

- **COM:** Common connection.
- **NC:** Normally Closed, the COM/NC circuit is closed (passes current) when the relay is not triggered and open when the relay is triggered.
- **NO:** Normally Open, the COM/NO circuit is open when the relay is not triggered and closed (passes current) when the relay is triggered.

### Configuration

There are three relays available. Their behaviour can be configured on the Relays page. For each relay, the following properties can be configured:

- **Enabled:** If checked, indicates that the relay should respond to breath test results and enables remaining configuration items for the relay.
- **Duration:** If the relay is enabled and a breath test result falls within its configured range, the relay should fire for a number of seconds, equal to the configured duration.
- The *Relay Status* indicates if the relay is currently **ON** or **OFF**.

There are three buttons on this page that briefly activate the relays. (Located under TEST)

## FUNCTIONS

### Functions Menu

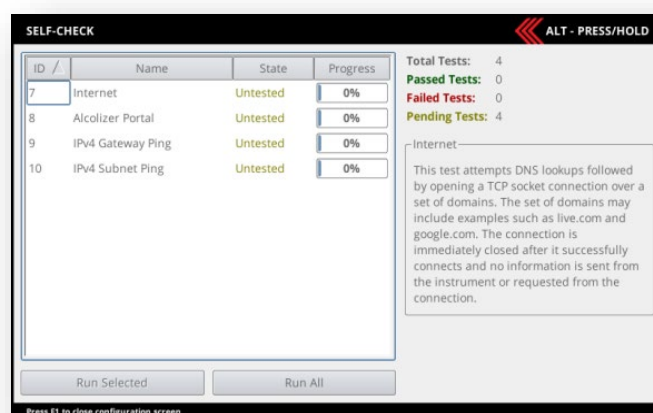
1. Connect a **USB flash drive** to an available USB port.
2. Press **FN4** key, **Functions screen** will be displayed.
3. With **“Export logs”** selected, press **FN4** again to begin the download.
4. Use the **Menu** button to select **“Exit”**, then press **FN4** to return to the operational screen.
5. On the operational screen, a **progress bar** will appear to indicate the export status.

**Note:** If the log data is small, the progress bar may not appear. Download time will vary depending on the size of the log data.

## SELF-CHECK

The **Self-Check** page allows users to run automated tests to validate the instrument’s configuration and behaviour.

- Each test displays its **title**, **description**, and whether it has been **recently tested**.
- Users can run **one**, **multiple**, or **all** tests.
- Some tests may require **user interaction**. If so, on-screen instructions will guide the user through the process.



## BREATH TEST AUTHORISATION

Breath Test Authorisation is a security feature that prevents the Centurion Quantum from performing a breath test until it receives **authorisation from an external agent** (e.g., remote serial device, keypad, etc.).

### How It Works

- The authorising agent sends a **code** to the Centurion.
  - This code enables the device to perform **one breath test**.
  - After the test, the **authorisation code** and **source** are logged with the test result.
  - If a test is not performed within the **timeout period**, the authorisation expires, and a new code is required.
- For setup assistance, please contact your **Alcolizer account manager**.

### Authorisation Channels

Authorising agents connect to the Centurion via **authorisation channels**, which combine a **physical connection** and a **software protocol**.

The following authorisation channels are supported depending on model being used:

- Two RS-232 serial ports (Serial 1 and Serial 2) running the americium serial protocol.
- Any number of direct network connections running the americium serial protocol.
- HID input device attached to a USB port (keyboard, card reader, etc).

## AUTHORISATION CODE ENTRY

These settings are only accessible when **Breath Test Authorisation** is enabled. They apply specifically to authorisation code entry via a **USB input device** (e.g., keyboard, card reader).

### Configuration Options

- **Enabled** – Check to allow authorisation codes to be entered using a USB input device.
- **Expiry Time** – Amount of time a user has to accept the input code (by pressing ENTER) before the code entry expires and the user must start again.
- **Display** – Specifies how password characters entered on the screen should be displayed.

## SERIAL PORT AUTHORISATION

The two RS-232 serial ports are activated with the Americium serial protocol (custom) at all times, whether test authorisation is enabled or not. This means that all breath test results are sent by the Centurion on both serial ports. If authorisation is enabled, then an agent can send authorisation codes to the Centurion on either serial port.

### Americium Serial Protocol

The Americium serial protocol operates on both serial ports simultaneously. By default, the instrument is configured to comply with the latest AS3547:2019 standard, so the Americium version will be limited to custom.

The following additional options are available for the default custom specification:

- **Code Encoding:** How to interpret the authorisation code. “Auto” will generally be suitable for most purposes.
  - **Unit of Measure:** Not configurable. By default, it will be “Custom (UI-UOM)”, which will reflect what is currently configured in the system.
  - **Send State:** Send the current state of the instrument every second.
  - **Send Qualitative Result:** Send qualitative result alongside numerical value.
  - **Send Photos:** Send base64 encoded photos with the breath test result (requires camera).
  - **Send Unit of Measure:** Append the unit of measure to the result string.
- Note:** The date/time is configured to local time (not UTC).

Please contact your Alcolizer Technology representative for further advice.

## UPGRADE SOFTWARE

To upgrade the software on your instrument, you need a USB flash drive. Follow the instructions below to download and save the latest version.

1. **Download** the latest software version to your computer.
2. Copy the software file (e.g., fm-17.0.software) to a USB flash drive.
3. Ensure the USB is formatted correctly and has sufficient space for the software file.

### INSTALLING THE UPDATE ON YOUR CENTURION

#### 1. Check for SDHC Card

- Open the instrument and check there is an **SDHC card**.
  - If not, contact Alcolizer Technology to obtain one.
  - The SDHC card must be **SDHC type, 2GB or more & formatted FAT32**

#### 2. Power On the Instrument

- The screen should display **“Start Blowing”**

#### 3. Insert the USB

- Containing the software update into any of the 4 USB ports.

#### 4. Software Validation

- Wait for the message **“Validating Software Upgrade Package”** to appear on the main screen.
  - This will display for approximately 15 seconds.

#### 5. Follow On-Screen Instructions

- A new message will appear prompting you to proceed.
- **Important** - You must press the **FN2 switch** within **45 seconds** or the update will be aborted.
- If this happens, remove and reinsert the USB to restart the process.

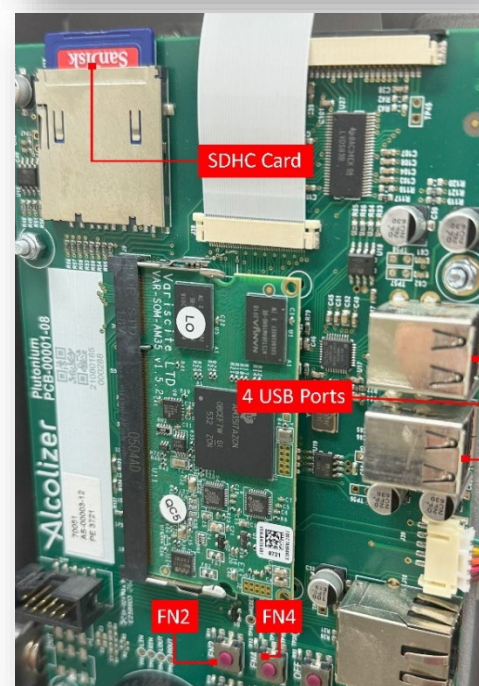
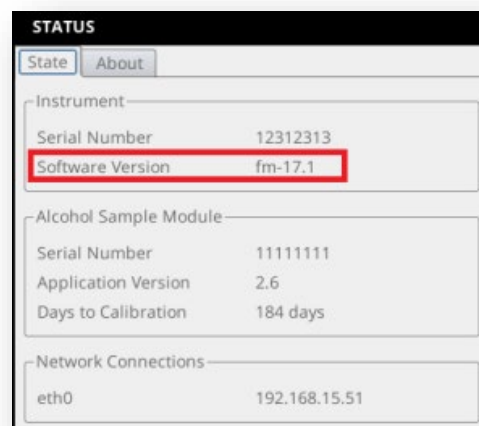
#### 6. Apply the Update

- Ensure **“Apply Software Update”** is highlighted.
- Press the **Select button (FN4)** on the Centurion board to confirm and begin the update.

### CHECKING THE SOFTWARE VERSION IN YOUR CENTURION

Once the Centurion has restarted and is displaying the idle (welcome) screen, you can confirm the installed firmware version via the **Configuration Status** page.

1. Press **FN1** to open the Configuration Status page.
2. The firmware version will be displayed on-screen.



**Note:** The Centurion will automatically restart and begin applying the software update. This process may take several minutes to complete. **Do not remove the USB during the software upgrade process.**

# CALIBRATION

## CALIBRATION INTERVAL

To ensure compliance, every breathalyser needs to undergo regular calibration and maintenance to maintain its accuracy, provide reliable results and comply with relevant standards e.g., Australian Standards. Calibration is the process of checking and adjusting the internal settings of a breath analyser by comparing and adjusting its test results to a known alcohol standard. Calibration requires specialised equipment and appropriately trained technicians. It is not a procedure that can be conducted by untrained users without the proper equipment.

## ALCOHOL SAMPLE MODULE (ASM) CALIBRATION

The Centurion instrument will require calibration of the exchangeable sample system every twelve (12) months. This service is to be completed by a service technician with appropriate training, however due to our patented technology and design only the Alcohol Sample Module (ASM) is required to be exchanged during the calibration process.

## INSTRUCTIONS FOR REPLACING THE ASM

### Turn the instrument OFF

The ASM is not intended to be a “Hot Swap” device, therefore Quantum must be powered OFF before the ASM is replaced. Turn the instrument OFF by pressing & releasing the OFF button once. Once the instrument has successfully powered down (the Stat5 light is solid green and the screen is off), unplug from the mains power supply. It is now safe to remove the ASM.

### Exchanging the ASM

- Locate the replacement (new) ASM supplied by Alcolizer Service team.
- Ensure the instrument is turned OFF and disconnected from mains power. Unlock and open the instrument and locate the ASM.
- Remove the black L-shaped drain tube and throw in the bin.
- Carefully remove the ASM by unscrewing the thumb bolt located towards the lower end of the ASM.
- Gently remove the sample module by lowering it slightly then pulling it out.
- A pre-calibrated sample module will have been sent to you prior to your current sample module’s expiry. Insert this one now.
- To replace your pre-calibrated ASM, the same method applies in reverse. Ensure the thumb bolt is not screwed in too tightly.

**NOTE:** The sample module that was removed needs to be sent to your nearest Alcolizer Pty Ltd distributor in the packaging supplied as per the instructions accompanying your replacement module.



*Demonstration video available on our website*

<https://alcolizer.com/module-exchange-how-to-guide/>

### Main Module Servicing

There is no requirement to service the main module, only the ASM, but on replacement of the ASM it is advisable to inspect the state of the chassis and screen and advise Alcolizer if there are any concerns.

## PRINTER SETUP

Alcolizer Centurion supports ONLY the following printers

- Epson TM-T82III
- Epson TM-T20 USB model
- Epson TM-T82IIIL

To set up the Epson TM-T20 USB model

- Unpack the printer. Remove any tape used to secure parts for transport, then fit paper roll.
- Turn the Centurion off and carefully open the instrument.
- Connect printer to the Centurion using USB cable supplied with the printer. Use any available USB port located on the board.
- Close the Centurion. Then, turn on the Centurion and the printer.
- The printer should now be operational. Please refer to printer specifications for printer configuration.

## TROUBLESHOOTING

### CONTACTING SERVICE

#### Routine servicing of the ASM

Typically, a replacement ASM should be sent to you by your Authorised Service Representative several weeks ahead of time. In the event this did not occur please contact your Service Representative having details of your instrument to hand: instrument make and model, serial number, and location/address if relevant.

#### Contacting Alcolizer Service

In the event the instrument malfunctions or a warning message should appear on the screen, consult Alcolizer Technology in the first instance.

***Troubleshooting should the instrument malfunction or a warning message appear on the screen, please contact our service team.***

- Phone 1300 789 908
- Email [service@alcolizer.com](mailto:service@alcolizer.com)
- Web [www.alcolizer.com](http://www.alcolizer.com)

#### Returning equipment to Alcolizer Service

If the machine is to be returned to Alcolizer, prepare it for shipment in accordance with the following procedures: •  
Unlock and open the instrument.

- Turn off the instrument by pressing & releasing the OFF button. Unplug the power cord.
- Using safe lifting techniques, lift the instrument off the back plate hinges and remove it from the wall.
- Pack the instrument into its Alcolizer provided container or other suitable packaging to ensure it is not damaged in freight.

| Issue  | Recommended Action  |
|--|---|
| <i>“Out of Order” message appears on screen after start-up</i> | Contact Alcolizer Technology for further advice <b>1300 789 908</b> .   |
| <i>“Out of Order” message persists after multiple restarts</i> | Contact Alcolizer Technology for further advice <b>1300 789 908</b> .   |
| <i>Warning icon displayed in bottom-left corner</i>            | This indicates status items may require attention. Press <b>FN1</b> to view details. It may also mean the service life is nearing expiry. Contact Alcolizer Service immediately to arrange service. |
| <i>How do I locate the FN buttons to access the menu?</i>      | The FN buttons are located on the circuit board. Refer to pg 22 for image showing their location.   |
| <i>“Service Life has Expired” message displayed</i>            | The instrument has reached the end of its service life. Contact Alcolizer service team to arrange a replacement module. Please have your <b>serial number</b> ready when calling.                   |

### Troubleshooting Guide



## HELP US IMPROVE LEAVE A REVIEW

We’d love to hear about your experience with Alcolizer Technology. Your feedback helps us improve and also supports other customers in making informed decisions.

**Please take a moment to leave us a review — we really appreciate it. Thank you!**